

## 8 MBIT (512 K WORD BY 16 BITS/1 M WORD BY 8 BITS) CMOS MASK ROM

DESCRIPTION

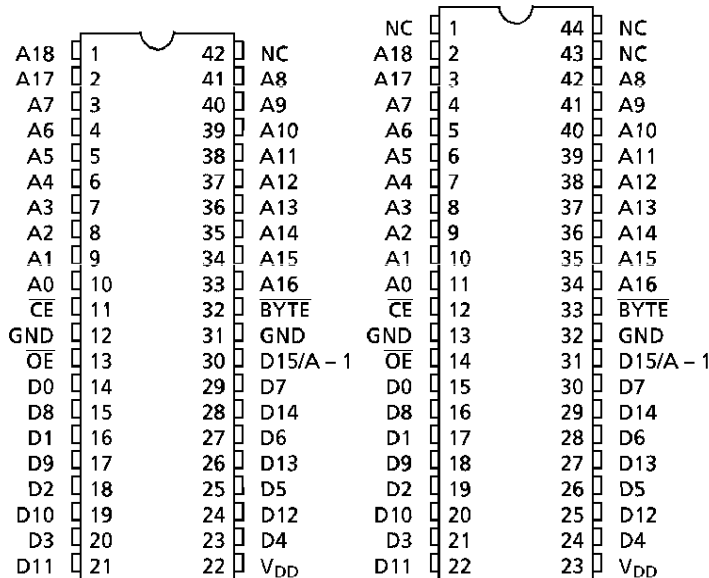
The TC538200AP/AF is a 8,388,608-bit Read Only Memory organized as 524,288 words by 16 bits when  $\overline{\text{BYTE}}$  is logical high, and as 1,048,576 words by 8 bits when  $\overline{\text{BYTE}}$  is logical low.

The TC538200AP/AF is most suitable for application such as program memory, data memory fast high speed from, and character generators.

The TC538200AP/AF is packaged in a standard 600 mil 42-pin DIP or 600 mil 44-pin SOP or 400 mil 44-pin TSOP Type II.

FEATURES

- Single 5 V Power Supply
- Access Time: 150 ns (max)
- Power Dissipation
  - Operating Current: 60 mA (max)
  - Standby Current : 100  $\mu\text{A}$  (max)
- Fully Static Operation
- All Inputs and Outputs: TTL Compatible
- Three State Outputs
- TC538200AP: DIP42 – P – 600
- TC538200AF: SOP44 – P – 600
- TC538200AFT: TSOP44 – P – 400

PIN ASSIGNMENT (TOP VIEW)

TC538200AP

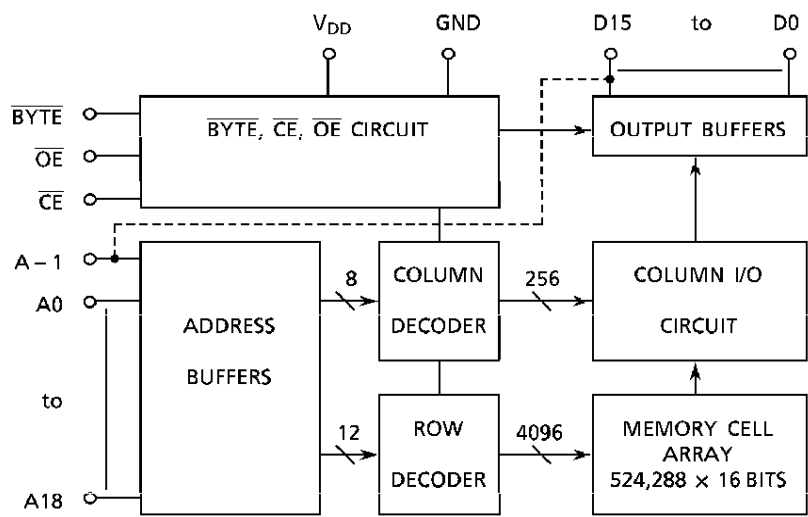
TC538200AF  
TC538200AFTPIN NAMES

A0 to A18	Address Inputs
D0 to D14	Data Outputs
$\overline{\text{CE}}$	Chip Enable Input
$\overline{\text{OE}}$	Output Enable Input
D15/A – 1	Data Output/Address Input
$\overline{\text{BYTE}}$	Word, Byte Selection Input
$V_{\text{DD}}$	Power Supply
GND	Ground
NC	No Connection

961001EBA2

- TOSHIBA is continually working to improve the quality and the reliability of its products. Nevertheless, semiconductor devices in general can malfunction or fail due to their inherent electrical sensitivity and vulnerability to physical stress. It is the responsibility of the buyer, when utilizing TOSHIBA products, to observe standards of safety, and to avoid situations in which a malfunction or failure of a TOSHIBA product could cause loss of human life, bodily injury or damage to property. In developing your designs, please ensure that TOSHIBA products are used within specified operating ranges as set forth in the most recent products specifications. Also, please keep in mind the precautions and conditions set forth in the TOSHIBA Semiconductor Reliability Handbook.
- The products described in this document are subject to foreign exchange and foreign trade control laws.
- The information contained herein is presented only as a guide for the applications of our products. No responsibility is assumed by TOSHIBA CORPORATION for any infringements of intellectual property or other rights of the third parties which may result from its use. No license is granted by implication or otherwise under any intellectual property or other rights of TOSHIBA CORPORATION or others.
- The information contained herein is subject to change without notice.

BLOCK DIAGRAM



MODE SELECTION

MODE	$\overline{\text{CE}}$	$\overline{\text{OE}}$	BYTE	D0 TO D7	D8 TO D14	D15/A - 1	POWER
Read (16-Bit)	L	L	H	Data Out			Active
Read (8-Bit)	L	L	L	Data Out (Lower 8 bits)	High Impedance	L	Active
Read (8-Bit)	L	L	L	Data Out (Upper 8 bits)	High Impedance	H	Active
Output Deselect	L	H	*	High Impedance			Active
Standby	H	*	*	High Impedance			Standby

H:  $V_{\text{IH}}$  L:  $V_{\text{IL}}$  \*:  $V_{\text{IH}}$  or  $V_{\text{IL}}$

ABSOLUTE MAXIMUM RATINGS

SYMBOL	RATING	VALUE	UNIT
$V_{\text{DD}}$	Power Supply Voltage	- 0.5 to 7.0	V
$V_{\text{IN}}$	Input Voltage	- 0.5 to $V_{\text{DD}}$	V
$V_{\text{OUT}}$	Output Voltage	0 to $V_{\text{DD}}$	V
$P_{\text{D}}$	Power Dissipation	1.0/0.6*	W
$T_{\text{STG}}$	Storage Temperature	- 55 to 150	°C
$T_{\text{OPR}}$	Operating Temperature	0 to 70	°C
$T_{\text{SOLDER}}$	Soldering Temperature (10 s)	260	°C

\* SOP/TSOP

DC RECOMMENDED OPERATING CONDITIONS ( $T_a = 0^\circ$  to  $70^\circ\text{C}$ )

SYMBOL	PARAMETER	MIN	TYP	MAX	UNIT
$V_{DD}$	Power Supply Voltage	4.5	5.0	5.5	V
$V_{IH}$	Input High Voltage	2.2	–	$V_{DD} + 0.3$	V
$V_{IL}$	Input Low Voltage	– 0.3	–	0.8	V

DC CHARACTERISTICS ( $T_a = 0^\circ$  to  $70^\circ\text{C}$ )

SYMBOL	PARAMETER	CONDITIONS	MIN	MAX	UNIT
$I_{IL}$	Input Leakage Current	$V_{IN} = 0$ to $V_{DD}$	–	$\pm 1.0$	$\mu\text{A}$
$I_{LO}$	Output Leakage Current	$V_{OUT} = 0$ to $V_{DD}$	–	$\pm 5.0$	$\mu\text{A}$
$I_{OH}$	Output High Current	$V_{OH} = 2.4\text{ V}$	– 1.0	–	mA
$I_{OL}$	Output Low Current	$V_{OL} = 0.4\text{ V}$	2.0	–	mA
$I_{DD\text{S}1}$	Standby Current	$\overline{CE} = V_{IH}$	–	2	mA
$I_{DD\text{S}2}$		$\overline{CE} = V_{DD} - 0.2\text{ V}$	–	100	$\mu\text{A}$
$I_{DD\text{O}1}$	Operating Current	$V_{IN} = V_{IH}/V_{IL}$ , $t_{\text{cycle}} = 150\text{ ns}$	–	70	mA
$I_{DD\text{O}2}$		$V_{IN} = V_{DD} - 0.2\text{ V}/0.2\text{ V}$ , $t_{\text{cycle}} = 150\text{ ns}$	–	60	mA

CAPACITANCE ( $f = 1\text{ MHz}$ ,  $T_a = 25^\circ\text{C}$ )

SYMBOL	PARAMETER	CONDITIONS	MIN	MAX	UNIT
$C_{IN}$	Input Capacitance	$V_{IN} = 0\text{ V}$	–	10	pF
$C_{OUT}$	Output Capacitance	$V_{OUT} = 0\text{ V}$	–	12	pF

Note: This parameter is periodically sampled and is not tested for every component.

AC CHARACTERISTICS AND OPERATING CONDITIONS

(Ta = 0° to 70°C, VDD = 5 V ± 10%)

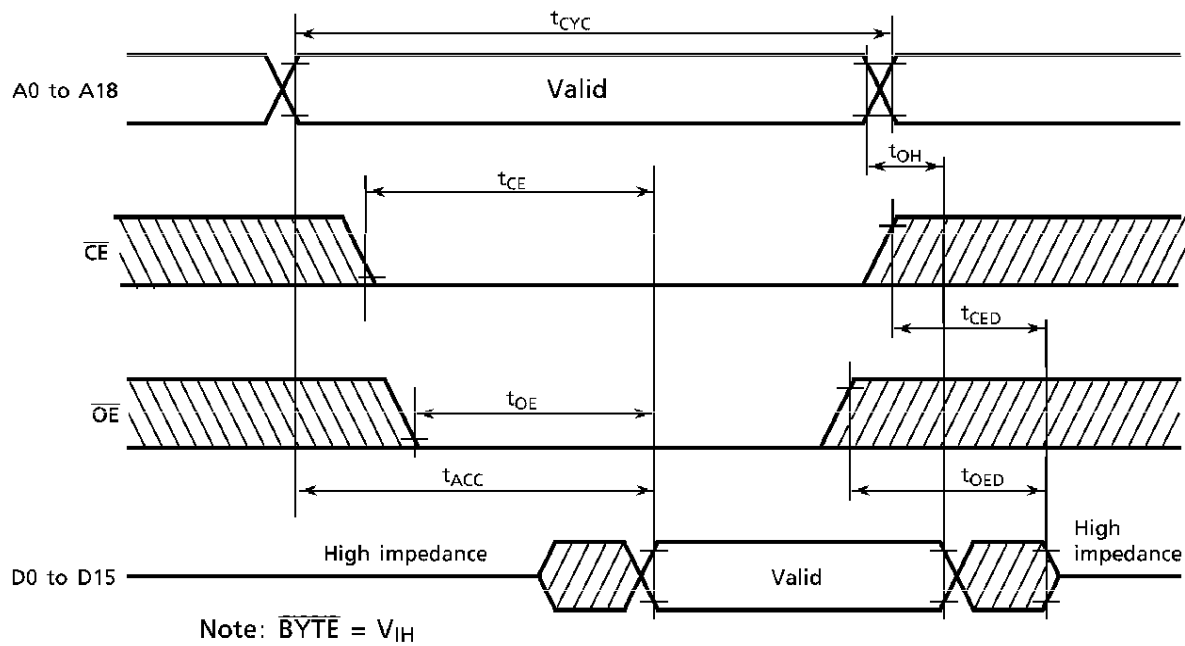
SYMBOL	PARAMETER	MIN	MAX	UNIT
tCYC	Cycle Time	150	–	ns
tACC	Address Access Time	–	150	ns
tCE	Chip Enable Access Time	–	150	ns
tBT	BYTE Access Time	–	150	ns
tOE	Output Enable Access Time	–	70	ns
tCED	Output Disable Time from $\overline{\text{CE}}$	–	60	ns
tOED	Output Disable Time from $\overline{\text{OE}}$	–	60	ns
tBTD	Output Disable Time from $\overline{\text{BYTE}}$	–	60	ns
tOH	Output Hold Time	5	–	ns

AC TEST CONDITIONS

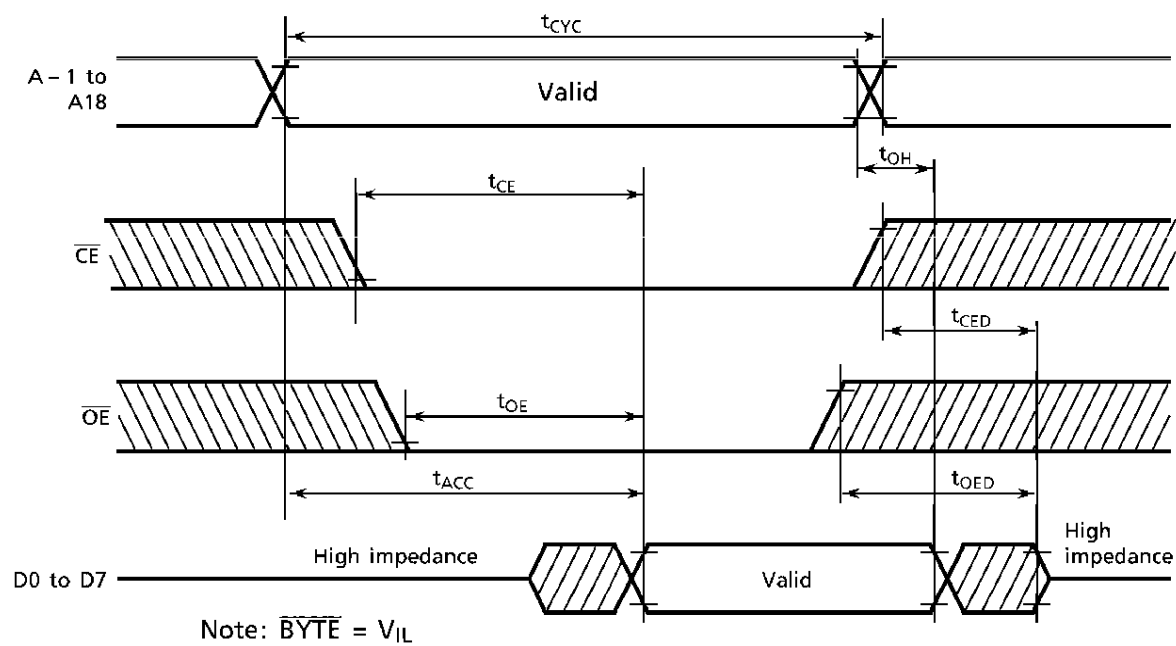
Output Load : 100 pF + 1 TTL  
Input Levels : 0.6 V, 2.4 V  
Timing Measurement Reference Levels Input : 0.8 V, 2.2 V  
Output: 0.8 V, 2.0 V  
Input Rise and Fall Time : 5 ns

TIMING DIAGRAMS

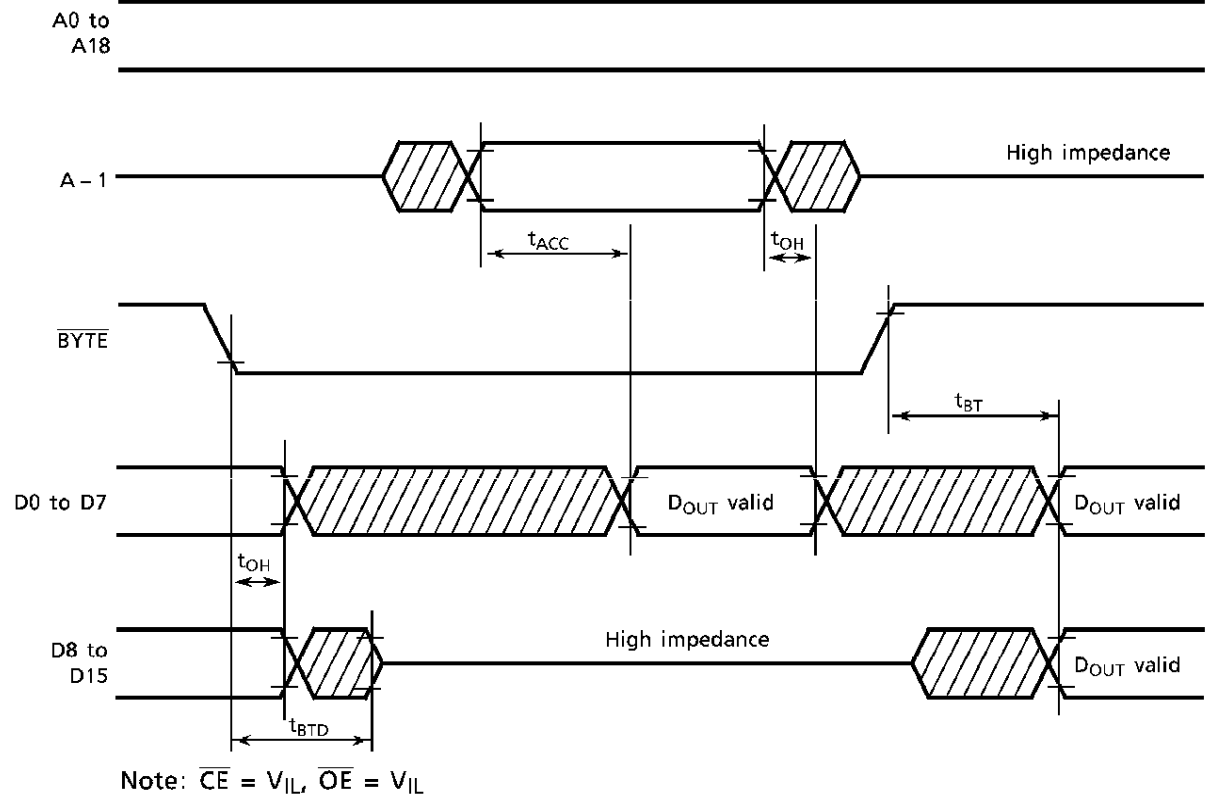
WORD-WIDE READ MODE



BYTE-WIDE READ MODE



BYTE TRANSITION

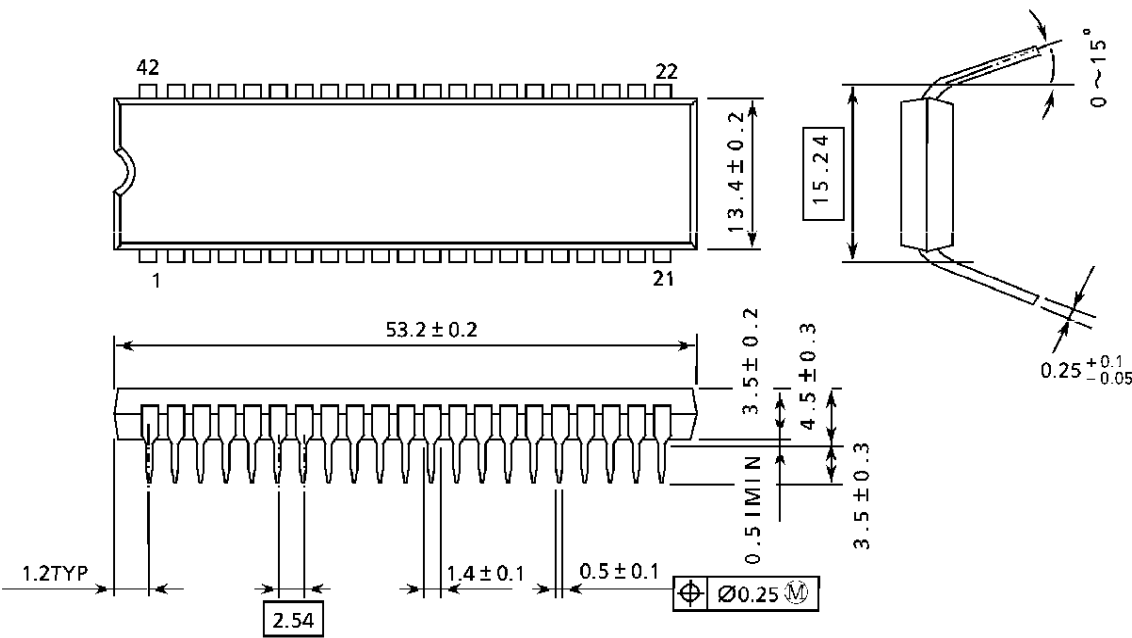


PACKAGE DIMENSIONS

- Plastic DIP

DIP42 – P – 600 – 2.54

UNITS: mm

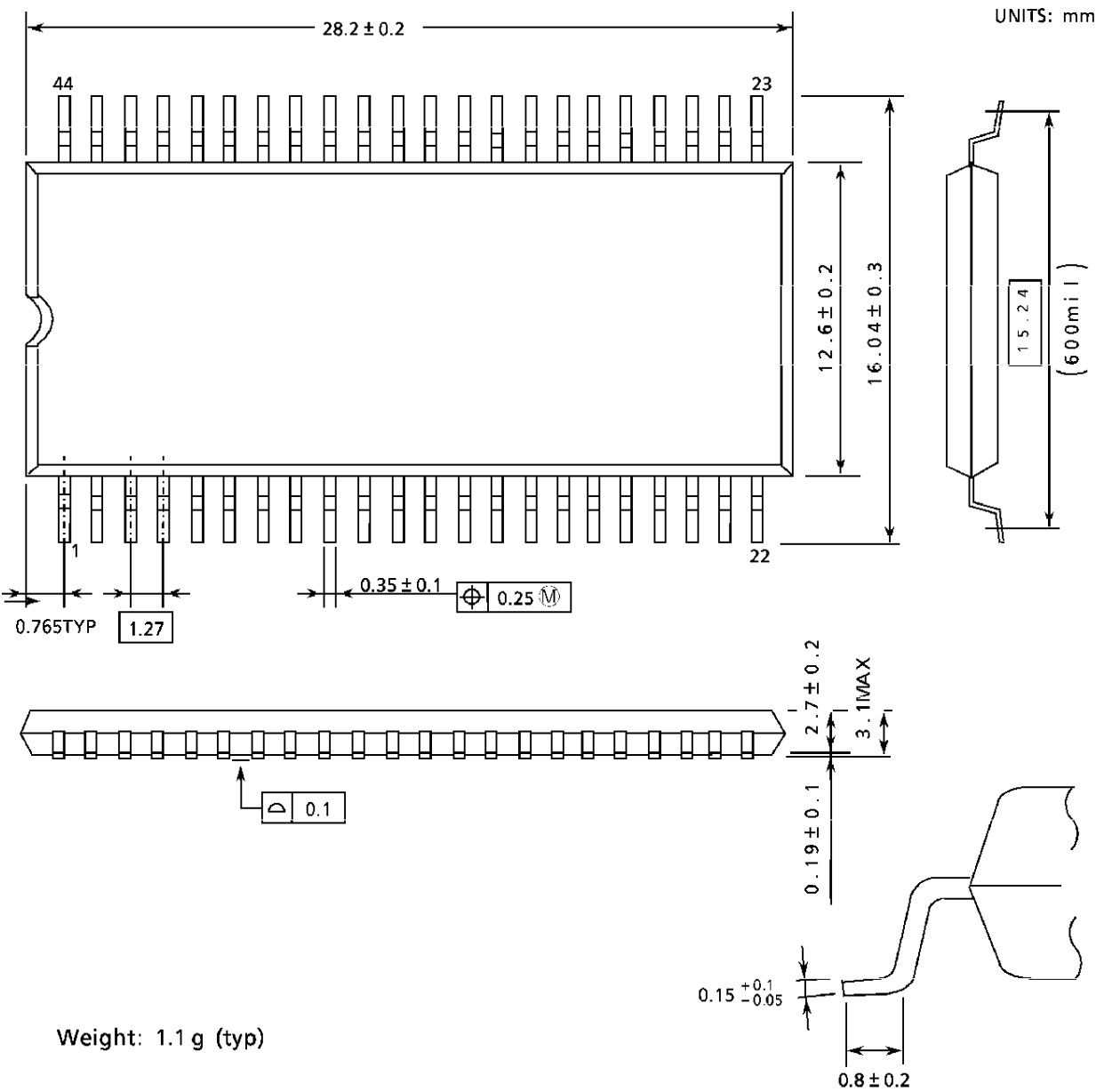


Weight: 5.7 g (typ)

Note: Package width and length do not include mold protrusion. The permissible mold protrusion is 0.15 mm.

PACKAGE DIMENSIONS

- Plastic SOP  
SOP44-P-600-1.27

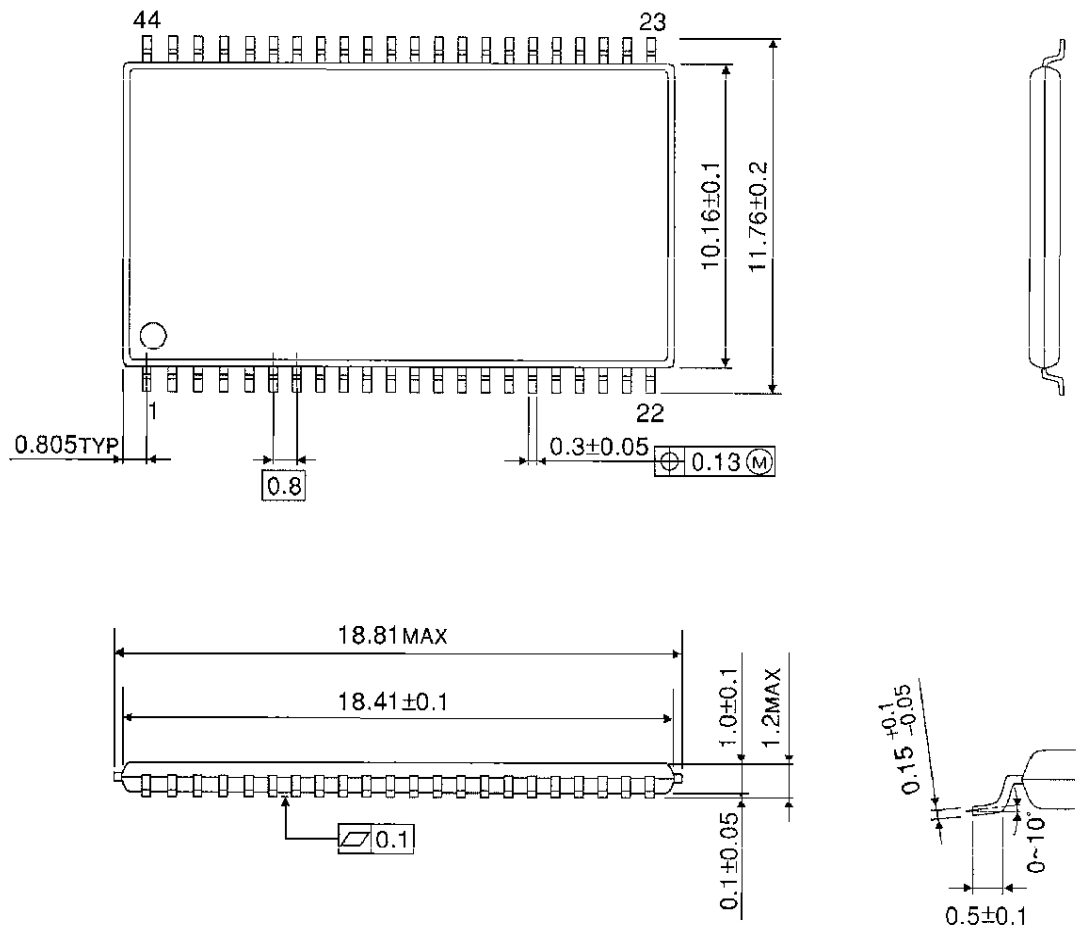


Note: Package width and length do not include mold protrusion. The permissible mold protrusion is 0.15 mm.

PACKAGE DIMENSIONS

● TC534200CFT

TSOP II 44 – P – 400 – 0.80



Weight : 0.5g (Typ)